

COBRA

MODEL: RM43SP80V (DYM192001)

COBRA LAWN MOWER OWNER'S MANUAL



WARNING!

When using the machine the safety rules must be followed. For your own safety and bystanders please read these instructions before operating the machine. Please keep the instructions safe for later use.

Cobra Garden Machinery

Henton and Chattell Ltd., London Road, Nottingham NG2 3HW UK

www.cobragarden.co.uk

CONTENT

SECTION 1 SYMBOLS MARKED ON THE PRODUCT	3
SECTION 2 GENERAL SAFETY RULES.....	4
SECTION 3 GENERAL IDENTIFICATION	7
SECTION 4 TECHNICAL DATA	8
SECTION 5 ASSEMBLY	8
SECTION 6 ADJUSTMENT OF CUTTING HEIGHT.....	11
SECTION 7 SAFETY PRECAUTIONS.....	11
SECTION 8 OPERATION INSTRUCTIONS.....	11
SECTION 9 BLADE	14
SECTION 10 MAINTENANCE AND CARE.....	15
SECTION 11 STORAGE.....	15
SECTION 12 TROUBLESHOOTING.....	16
SECTION 13 WARRANTY.....	17
SECTION 14 ENVIRONMENTALLY FRIENDLY DISPOSAL	17
SECTION 15 EC-DECLARATION OF CONFORMITY	18

KNOW YOUR LAWN MOWER

Read this manual carefully, observing the recommended safety instructions before, during and after using your lawn mower. Following these simple instructions will also maintain your lawn mower in good working order. Familiarize yourself with the controls on your mower before attempting to operate it, but above all, be sure you know how to stop your mower in an emergency. Retain this user manual and all other literature with your mower for future reference.

1. SYMBOLS MARKED ON THE PRODUCT



Read this instruction book carefully before using the lawn mower and keep it in a safe place for future reference.



Keep bystanders away.



Beware of sharp blades. Blades continue to rotate after the motor is switched off.



Switch off isolator key before adjusting, cleaning and before leaving the product unattended for any period.



The charger is intended for indoor use only.



Wear eye and ear protection.



The machine is protected against ingress of water drops from a vertical direction



Do not expose to rain or damp conditions.



Do not operate on inclines greater than 15. Mow across the face of slopes, never up and down.



CE Marking

The product meets demands and regulations set by the European Community.

WEEE Marking

CAUTION! Unusable power tools do not belong with domestic waste. They must be taken to a communal collecting point for environmentally friendly disposal in accordance with local regulations.



Battery Disposal:

Old accumulators and batteries must not be added to household waste, but should be disposed of in accordance with the applicable legislation.

- Take unusable rechargeable batteries to the dealer's or community's battery collection point.

Disposing of the packaging:

The packaging is made of cardboard and separately labeled foil which is also recyclable.

- Take these materials to a recycling centre.

Disposing of the packaging:

The packaging is made of cardboard and separately labeled foil which is also recyclable.

- Take these materials to a recycling centre.

Battery packs/batteries: Li-Ion



Do not dispose of batteries into household waste, water or fire. Battery packs/batteries must be collected, recycled or disposed of in an environmentally -friendly way.

Defective or dead batteries must be recycled according to the directive 2006/66/EC



Noise level marking.

Your tool noise is not more than 96dB.



SAFETY ALERT SYMBOL:

Indicates caution or warning may be used in conjunction with other symbols or pictures.

2. GENERAL SAFETY RULES

The purpose of the safety rules is to attract your attention to possible dangers. The safety symbols and the explanations with them, require your careful attention and understanding. The safety warnings do not by themselves eliminate any danger. The instruction or warnings they give are not a substitutes for proper accident prevention measures.



WARNING: Failure to follow a safety warning can result in serious injury to yourself or to others. Always follow the safety precautions to reduce the risk of fire, electric shock and personal injury. Save the owners manual and review frequently for continuing safe operation and instructing others who may use this tool.



WARNING: This machine produces an electromagnetic field during operation. This field may under some circumstances interfere with active or passive medical implants. To reduce the risk of serious or fatal injury, we recommend persons with medical implants to consult their physician and the medical implant manufacturer before operating this machine.



WARNING: The operation of any tool can result in foreign objects being thrown into your eyes, which can result in eyes being severely damaged. Before beginning power tool operations, always wear safety goggles or safety glasses with side shields and a full face shield when needed. We recommend wide vision safety masks for use over eyeglasses or standard safety glasses with side shield.

IMPORTANT
READ CAREFULLY BEFORE USE.
KEEP FOR FUTURE REFERENCE.

- 1) Read the instructions carefully. Be familiar with the controls and the proper use of the equipment.
- 2) Never allow children or people unfamiliar with these instructions to use the lawnmower. Local regulations can restrict the age of the operator
- 3) Never mow while people, especially children, or pets are nearby.
- 4) Keep in mind that the operator or user is responsible for accidents or hazards occurring to other people or their property.
- 5) While mowing, always wear substantial footwear and long trousers. Do not operate the equipment when barefoot or wearing open sandals; Avoid wearing clothing that is loose fitting or that has hanging cords or ties.
- 6) Thoroughly inspect the area where the equipment is to be used and remove all objects which can be thrown by the machine.
- 7) Before using, always visually inspect to see that the blades, blade bolts and cutter assembly are not worn or damaged. Replace worn or damaged blades and bolts in sets to preserve balance. Replace damaged or unreadable labels.
- 9) Mow only in daylight or in good artificial light.
- 10) Avoid operating the equipment in wet grass, where feasible.
- 11) Always be sure of your footing on slopes.
- 12) Walk, never run.
- 13) For rotary mowers; mow across the face of slopes, never up and down.
- 14) Exercise extreme caution when changing direction on slopes.
- 15) Do not mow excessively steep slopes.
- 16) Use extreme caution when reversing or pulling the lawnmower towards you.
- 17) Stop the blades if the lawn mower has to be tilted for transportation when crossing surfaces other than grass, and when transporting the lawn mower to and from the area to be mowed.
- 18) Never operate the lawnmower with defective guards, or without safety devices, for example deflectors and/or grass catchers, in place.
- 19) Start or switch on the motor carefully according to instructions and with feet well away from the blades.
- 20) Do not tilt the lawnmower when starting switching on the motor, except if the lawnmower has to be tilted for starting. In this case, do not tilt it more than absolutely necessary and lift only the part which is away from the operator.
- 21) Do not start the motor when standing in front of the discharge chute.
- 22) Do not put hands or feet near or under rotating parts. Keep clear of the discharge opening at all times.
- 23) Never pick up or carry a lawnmower while the motor is running.
- 24) Stop the motor and switch off the isolator key. Make sure that all moving parts have come to a complete stop.
 - whenever you leave the machine
 - before clearing blockages or unclogging chute
 - before checking, cleaning or working on the lawnmower
 - after striking a foreign object. Inspect the lawnmower for damage and make repairs before restarting and operating the lawnmower
- If the lawnmower starts to vibrate abnormally (check immediately)
 - inspect for damage
 - replace or repair any damage parts.
 - check for and tighten any loose parts.
- 25) Stop the mower, whenever you leave the lawnmower
- 26) Keep all nuts, bolts and screws tight to be sure the equipment is in safe working condition.

- 27) Check the grass catcher frequently for wear or deterioration.
- 28) Replace worn or damaged parts for safety.
- 29) Children are not allowed to use the machine.
- 30) This appliance is not intended for use by persons with reduced physical, sensory or mental capabilities, or lack of experience and knowledge, unless they have been given supervision or instruction concerning use of the appliance by a person responsible for their safety.
- 31) Be careful during adjustment of the machine to prevent entrapment of the fingers between moving blades and fixed parts of the machine.
- 32) Always allow the machine to cool before storing.
- 33) After use and before storage, remove the battery from the machine and check for damage.
- 34) When servicing the blades be aware that, even though the power source is switched off, the blades can still be moving.
- 35) Replace worn or damaged parts for safety; Use only genuine replacement parts and accessories.
- 37) Recharge only with the charger specified by the manufacturer. Using a charge with an incompatible battery pack may create a risk of fire.
- 38) Use power tools only with specifically designated battery packs. Use of any other battery packs may create a risk of injury and fire.
- 39) When the battery pack is not in use, keep it away from other metal objects like, paper clips, coin, keys, nails, screws, or other small metal objects, that can make a connection from one terminal to another. Shorting the battery terminals together may cause burns or a fire.
- 40) If the battery is damaged, liquid may be ejected from the battery:
 - If contact accidentally occurs, flush with water.
 - If liquid contacts eyes seek medical help immediately. Liquid ejected from the battery may cause irritation or burns.

Safety Advice for Rechargeable Battery and Charger

Use only the battery provided with the lawn mower and the provided charger.

Protect the battery and the battery charger from humidity and damp conditions.

Do not operate the battery charger outdoors.

When it is not in use or before cleaning and servicing, disconnect the battery charger from the power supply.

Take special care of the battery. Avoid dropping it onto any hard surface and do not subject it to pressure or any other form of mechanical stress. Keep the battery away from extreme heat and cold.

Do not open or attempt to repair the battery or the battery charger. If any parts are defective, have them repaired by a qualified technician or send them to our service department for repair.

Only charge the battery at an ambient (surrounding air) temperature between 0°C and +40°C.

A charged battery can be used to power the machine under ambient temperature conditions between -20 °C and +40 °C. When not in use, store the battery in a dry place between 10°C and 30°C.

Recharge the battery as soon as the mower's performance starts to decline. DO NOT CONTINUE using product with its battery in a depleted condition. **The battery is not fully charged at the factory.** Before attempting to use it, it must be fully charged firstly.



Important! Danger!

Never short-circuit the battery or expose it to moisture. Do not store it together with any metal parts which could short-circuit the contacts. The battery could overheat, start burning or explode. If any person comes into contact with acid or similar internal fluids or substances contained in the battery, wash off these substances immediately with plenty of water. If these substances make contact with the eyes, rinse with plenty of water and visit a doctor immediately.



WARNING!

Do not dismantle the battery pack to remove the battery cells.

Do not place the rechargeable battery into fire or water. It can explode. The rechargeable battery should not be discarded to domestic refuse, regardless of whether used or unused. You should return it to a local battery collection point in accordance with Battery Regulations or return them to us suitably marked “Used Battery”.

3. GENERAL IDENTIFICATION

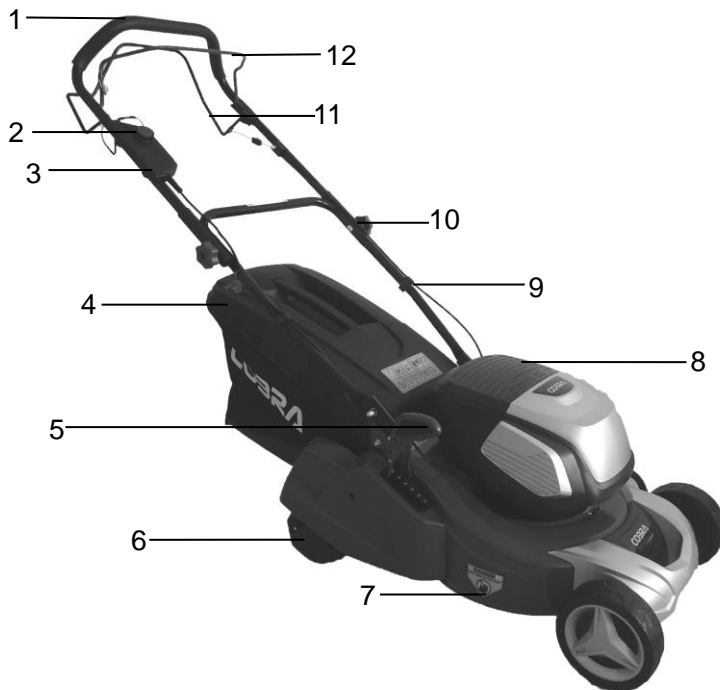


Fig.1

- | | | | |
|---------------------------|-----------------------|-------------------------------|------------------|
| 1. Upper handle | 2. Safety push-button | 3. Switch box | 4. Grass catcher |
| 5. Height adjusting lever | 6. Rear wheel | 7. Deck | 8. Battery door |
| 9. Cable clamp | 10. Locking knob | 11. Self-drive control handle | |
| 12. Brake control handle | | | |

4. TECHNICAL DATA

Model:	RM43SP80V (DYM192001)
Rated Voltage:	80V d.c.
No Load Speed:	2800min ⁻¹
Cutting Width:	430mm
Grass catch bag capacity	45L
Net Weight:	27.1kg
Height Adjustment :	17 - 75mm, 6 adjustment
Sound Pressure Level at The Operator's Position	76.4dB(A) K=3 dB(A)
Measured Sound Power Level	87.9dB(A) K=0.87dB(A)
Guaranteed Sound Power Level	91dB(A)
Vibration	0.7m/s ² K=1.5 m/s ²

Battery	Lithium-ion
Model Number	DYMA104
Rated Voltage	40Vd.c.
Capacity	5.0AH/180Wh
Number of Battery	20pcs
Battery Charger	
Model Number	DYMA85
Input	220-240VAC,50Hz,2A
Output	40Vd.c.,4A
Allowable Charging Temperature Range	0-50°C

5. ASSEMBLY

5.1 FOLDING HANDLE

1. Fix the lower handlebars into the mower body with bolts, washers, and locking nuts using a suitable spanner. (Fig.2A/Fig.2B/Fig.2C/Fig. 2D)
2. Release the upper handlebars for folding. (Fig. 2E)
3. Tighten the locking knobs to lock the upper handlebars in the operating position. (Fig.2E)
4. Attach the cable-clamp to the position shown and then attach the cable. (Fig.2F)



Fig.2A



Fig.2B



Fig.2C

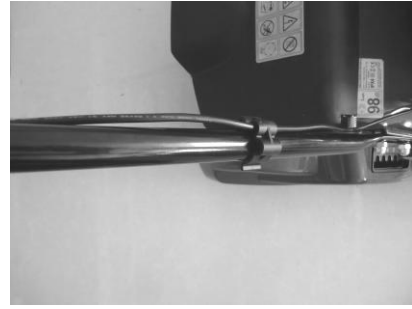


Fig.2D

Fig.2E

Fig.2F

5.2 FITTING AND REMOVING THE GRASS CATCHER

1. The grass catcher includes the grass bag and the metal frame. Insert the plastic hook of grass bag to the metal rod the cover. Make sure that all connections are engaged(Fig.3A/Fig.3B).
2. To fit: Raise the rear cover and hitch the grass catcher on rear of mower. (Fig.3C/Fig.3D/Fig.3E)
3. To remove: grasp and lift the rear cover, remove the grass catcher.

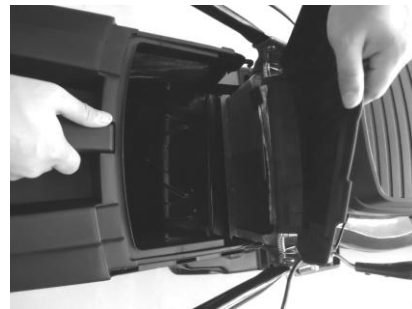


Fig.3A

Fig.3B

Fig.3C



Fig.3D

Fig.3E

5.3 FIT THE ISOLATOR KEY

1. Open the battery door. (Fig.4A)
2. Insert the isolator key into the slot. (Fig. 4B)

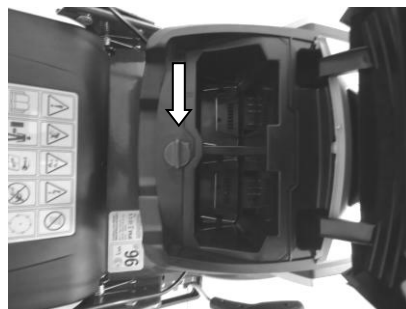


Fig.4A

Fig.4B

5.4 INSTALLING THE BATTERY

Please always fully charge the batteries before their first use.

1. Open the battery door.
2. Make sure the isolator key is switched off. Switch mark "1" is ON", "0" is "OFF". (Fig. 5A)
3. Insert the two battery packs into battery holder. (Fig. 5B/5C)
4. Make sure the latch on bottom of battery pack snaps in place and that battery pack is fully seated. (Fig. 5C)
5. Close the battery door. (Fig.5D)



Fig.5A



Fig. 5B



Fig. 5C



Fig.5D

5.5 REMOVE THE BATTERY

1. Open and hold up the battery door.
2. Press and hold the battery latch button at the bottom of the battery pack. (Fig.6)
3. Remove battery pack from the product. (Fig.6)



Fig.6

5.6 Rear Roller

The wide rear roller cuts right up to the edge of borders and create classic stripes so you'll achieve a beautiful finish to your lawn with ease. (Fig.7A/7B)

The lawn's appearance will be improved if it is always cut to the same height and is cut in alternate directions.

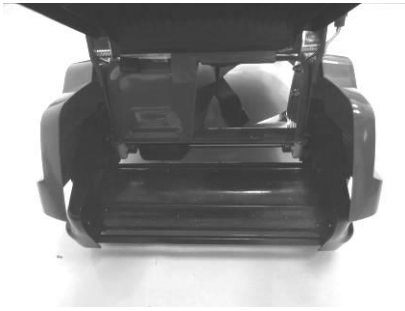


Fig.7A

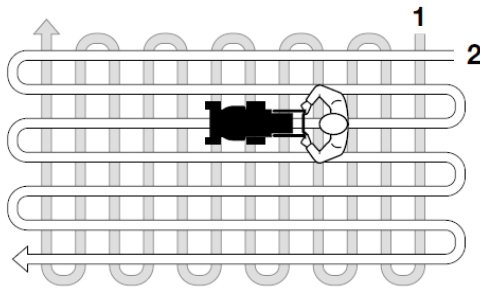


Fig.7B

6. ADJUSTMENT OF THE CUTTING HEIGHT

Apply outward pressure to disengage lever from the rack. Move the lever forward or back to adjust the height. The height (the blade to the ground) can be adjusted from 20mm to 75mm, 6 height positions.



Fig.8

WARNING: Make this adjustment only when the blade is stopped.

WARNING: Make sure the isolator key is switch off.

7. SAFETY PRECAUTIONS

1. Always operate with the deflector or grass catcher in the correct position.
2. Always stop the motor before removing the grass catcher or adjusting the height of cutting position.
3. Before mowing, remove all foreign objects from the lawn which may be thrown by the machine. While mowing, stay alert for any foreign objects which may have been missed.
4. Never lift the rear of the mower while starting the motor or during normal operation.
5. Never place your hands or feet underneath the under deck or into the rear discharge chute while the motor is running.

8. OPERATING INSTRUCTIONS

8.1 STARTING

1. Switch on the isolator key. (Fig.9A)
2. Press the safety push-button. (Fig.9B)
3. And then grasp the brake control bar and hold it against the upper handle. (Fig.9B) Release the safety button when the motor starts.

4. Release the brake control bar to stop the motor.



Fig.9A



Fig.9B

8.2 ENGAGING THE POWERDRIVE

When the motor has been started, engage the self-drive control handle bar by push the control towards the main handle. The lawnmower will move forward automatically with about 3.2km/h, by releasing the self-drive handle, the lawnmower will stop driving forward. (Fig.9)



Fig.10

⚠ CAUTION: your mower is designed to cut normal residential grass of a height no more than 250mm.

Do not attempt to mow through unusually tall dry or wet grass (e.g., pasture) or piles of dry leaves. Debris may build up on the mower deck or contact the motor presenting a potential fire hazard.

8.3 TO STOP MOWING

Release the brake control bar to stop mowing. (Fig.11)

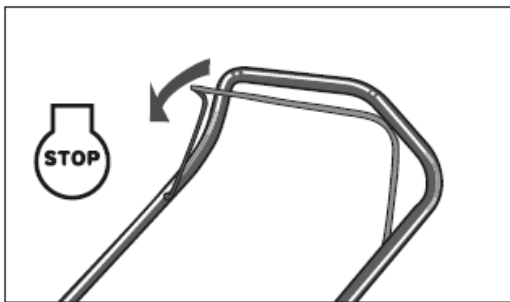


Fig.11

⚠ CAUTION: The blade continues to rotate for a few seconds after the motor is shut off.

8.4 LED

Please refer to the following table for the meaning of LED display.

Lawn mower status	Battery pack capacity indicator status (Press "POWER" button(1))	Abnormal situation indicator status
	Green light (2)	Red light (3)
The battery pack capacity is between 75%~100%.	Four LEDs ON	N/A
The battery pack capacity is between 50%~75%.	Three LEDs ON	N/A
The battery pack capacity is between 25%~50%.	Two LEDs ON	N/A
The battery pack capacity is between 0%~25%.	One LED ON	N/A
Motor blocked	N/A	ON
The battery pack is low voltage	N/A	Flashes twice
Overheat of motor controller	N/A	Frequently flashes

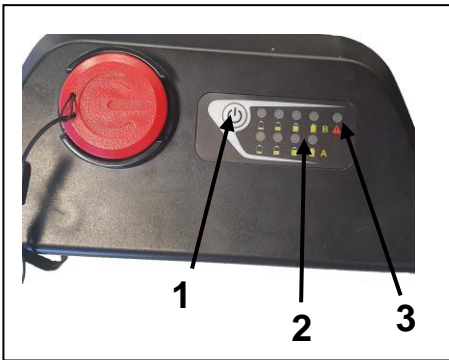


Fig.12 1- Indicator power
2 – Battery power level LEDs 3 – Fault Indicator

8.5 FOR THE BEST RESULTS WHEN MOWING

Clear the lawn of debris. Be sure that the lawn is clear of stones, sticks, wire or other foreign objects, which could be accidentally be thrown out by the mower in any direction and cause serious personal injury to the operator and others as well as damage to property and surrounding objects.

Do not cut wet grass. For effective mowing do not cut wet grass, because it tends to stick to the underside of the deck preventing proper collection of the grass clippings. Cut no more than 1/3 the length of the grass. The recommended cut for mowing is 1/3 the length of the grass. Ground speed will need to be adjusted, so the clippings can be dispersed evenly into the lawn.

When mowing long grass you may have to cut the lawn in two passes, lowering the blade another 1/3 of the length for the second cut and perhaps cutting in a different pattern than was used the first time. Overlapping the cut a little on each pass will also help to clean up any stray clippings left on the lawn. Clean the underside of deck. Be certain to clean the underside of the cutting deck after each use to avoid a build-up of grass, which would prevent proper cutting. Always remove the starter isolator before cleaning. Mowing leaves. The mowing of leaves can also be beneficial to your lawn. When mowing leaves make sure they are dry and are not laying too thick on the lawn. Do not wait for all the leaves to be off the trees before you mow.

WARNING: if you strike a foreign object, stop the motor. Switch off the isolator key, thoroughly inspect the mower for any damage and repair the damage before restarting and operating the mower. Extensive vibration of the mower during operation is an indication of damage. The unit should be promptly inspected and repaired.

8.6 GRASS CATCHER

There is a level indicator on the top of the grass catcher that shows whether the catcher is empty or full

- The level indicator inflates if the catcher is not full during the moving. (Fig. 13A)
- If the catcher is full, the indicator collapses; once this happens, stop mowing immediately and empty the catcher, make sure it is clean and ensure its meshwork is ventilated. (Fig. 13B)

⚠ IMPORTANT:

If the vents are very dirty, the indicator will not inflate-in this case, clean the vents to allow this feature to operate correctly.



Fig.13A

Fig.13B

8.7 DECK

The underside of the mower deck should be cleaned after each use to prevent a buildup of grass clippings, leaves, dirt or other matter. If this debris is allowed to accumulate, it will invite rust and corrosion, and may prevent proper mulching. The deck may be cleaned by tilting the mower and scraping clean with a suitable tool (make certain the isolator key is removed).

9. BLADE

The blade is made of pressed steel. It will be necessary to sharpen or replace to ensure the optimum performance of the mower. Ensure that it is always balanced (an unbalanced blade will cause dangerous vibrations). It is recommended to have your lawnmower serviced annually and have the blade replaced.

If the blade is removed and replaced, refit making sure that the cutting edges face in the direction of the motor rotation. The blade bolt (2) must be torqued to 25N.m.

⚠ WARNING: For service, replace the blade as below

MODEL	Blade
RM43SP80V	Cobra 2105200357

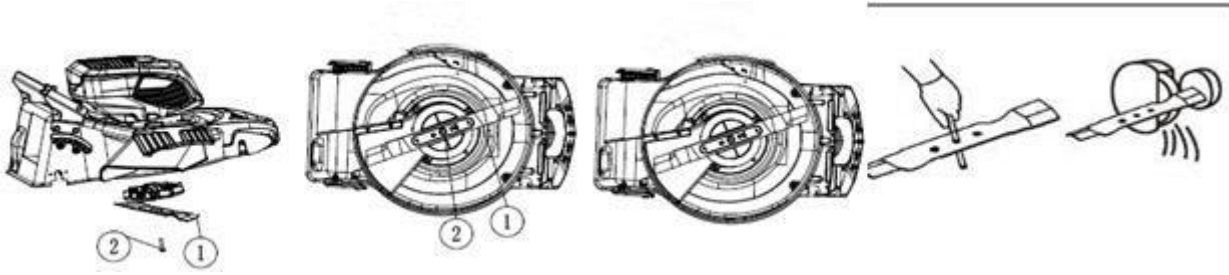


Fig.14

! WARNING: Remove the battery from the machine.

! WARNING: Protect hands by using heavy gloves or a rag to grasp the cutting blades when replacing the blade.

10. MAINTENANCE AND CARE

! Warning: Before performing any Maintenance or cleaning work, Always remove batteries and switch off the isolator key!

Do not spray the unit with water. Ingress of water may damage the switch-plug combination unit and the electric motor. Clean the unit with a cloth or soft hand brush.

Expert inspection is required in the following circumstances:

- a) if the lawn mower strikes an object.
- b) if the motor stops suddenly
- c) if the blade is bent (do not align!)
- d) if the motor shaft is bent (do not align!)
- e) If the V-belt is defective.
- f) Use only manufacturer's recommended replacement parts and accessories.

Contact your local dealer for assistance. Do not make any adjustment yourself.

11 .STORAGE

The following steps should be taken in order to prepare the lawn mower for storage.

1. Remove the battery pack from the mower and store it at room temperature in a dry location.
2. Clean the mower as described earlier in the maintenance section.
3. Inspect the blade and replace it or sharpen it if required.
4. Check and lubricate where possible.
5. Store the mower in a dry, clean location. Do not store it next to corrosive materials, such as fertilizer or rock salt.
6. Store the mower in a covered, enclosed space, that is cool and dry and out of the reach of children.
7. Do not cover the lawn mower with a solid plastic sheet. Plastic coverings trap moisture around the mower, which causes rust.

12. TROUBLESHOOTING

Fault	Remedial action
Motor does not run	Turn the power on Start on short grass or on an area which has already been mown. Clean the discharge channel/housing –the mowing blade must rotate freely. Correct the cutting height. Thermal cut out activated, allow motor to cool and increase height of cut
Motor power drops	Correct the cutting height. Clean the discharge channel/housing Have the mowing blade re-sharpened or replaced. Contact your local Cobra dealer.
Grass catcher is not filled	Correct the cutting height Allow the lawn to dry Have the mowing blade re-sharpened or replaced. Contact your local Cobra dealer. Clean the vents on the grass catcher Clean the discharge channel / housing
Motor runs intermittently	Thermal cut out activated, allow the motor to cool and increase height of cut
Machine leaves a ragged finish	Height of cut too low, increase height of cut Cutting blade blunt, have the blade re-sharpened or replaced



Warning: Before performing any maintenance or cleaning work, always remove batteries and switch off the isolator key! Only undertake maintenance with a stopped motor and a stationary blade.



CAUTION! Faults which cannot be rectified with the aid of this table may be rectified by a Cobra dealer.

13. WARRANTY

This product is warranted in accordance with legal regulations for a 24 month period effective from the date of purchase by the first user.

This product will not be covered if used in a commercial application.

This warranty covers all material or production failures, it does not include: defects from normal wear and tear, parts such as, bearings, brushes, cables, air cleaning elements, brake pad, clutch disc, tyre, wheel, recoil starter rope, belts, cutter blades, plugs, lubricant oils and grease or accessories. Damage or defects resulting from abuse, accidents or alterations, natural fading of painted or plated surfaces, sheet peeling and other natural deterioration.

Any damage that occurs from the use of non-genuine Cobra parts will not be covered.

We reserve the right to reject any claim where the purchase cannot be verified or when it is clear that the product was not maintained properly. (Clean ventilation slots, carbon brushes and serviced regularly)

Expenses incidental to the warranty claim that are not covered;

-Compensation for loss of time, commercial loss or rental costs of substitute product.

-Costs incurred for transportation to and from the dealership.

Any damage that occurs from the following will not be covered; exposure of the product to smoke and soot, chemical agents, bird droppings or other animal waste, seawater, sea breeze, salt or other environmental phenomena. Any damage resulting from operating methods other than those indicated in the owner's manual will not be covered.

Your purchase receipt must be kept as proof for date of purchase. Your un-dismantled mower must be returned to your dealer in an acceptably clean state, accompanied by your proof of purchase.

Please Register Your Mower

If your dealer did not collect registration information from you, please take a few minutes and register your purchase with Cobra. You can register by completing the online registration at:


www.cobragarden.co.uk and clicking on Product Registration.

14. ENVIRONMENTALLY FRIENDLY DISPOSAL



According to EU directive 2012/19/EU on electric and electronic equipment and its implementation into national law, all electric tools must be separately collected and environmentally friendly recycled. Alternative disposal: If the owner of the power tool does not return the tool to the manufacturer, he is responsible for proper disposal at a designated collection point that prepares the device for recycling according to national recycling laws and regulations. This does not include accessories and tools without electric or electronic components.

15. EC-DECLARATION OF CONFORMITY

EC Declaration of Conformity	
We herewith declare,	Cobra Garden Machinery Henton & Chattell Ltd, London Road, Nottingham NG2 3HW UK
That the following machine complies with the appropriate basic safety and health requirements of the EC Directive based on its design and type, as brought into circulation by us.	
In case of alteration of the machine, not agreed upon by us, this declaration will lose its validity	
Product	Cordless Lawn Mower
Machine Type:	RM43SP80V (DYM192001)
Rated voltage:	80Vd.c.
Measured sound power level:	87.9dB(A)
Guaranted sound power level:	91dB(A) Notified Body for EC Directive 2000/14/EC:0359 Intertek Testing&Certification Ltd Davy Avenue, Knowlhill, Milton Keynes, Mk5 8NL
Applicable EC Directives:	2014/30/EU 2006/42/EC 2000/14/EC 2011/65/EU
Applicable Harmonized Standards:	EN 60335-1 EN 60335-2-77 EN 62233 EN 55014-1 EN 55014-2
Authorized Signature/Date/ Place:	 4/8/2020
Title of Signatory:	Managing Director
Name and address of the person authorised to compile the technical file	Cobra Garden Machinery Henton & Chattell Ltd, London Road, Nottingham NG2 3HW UK